

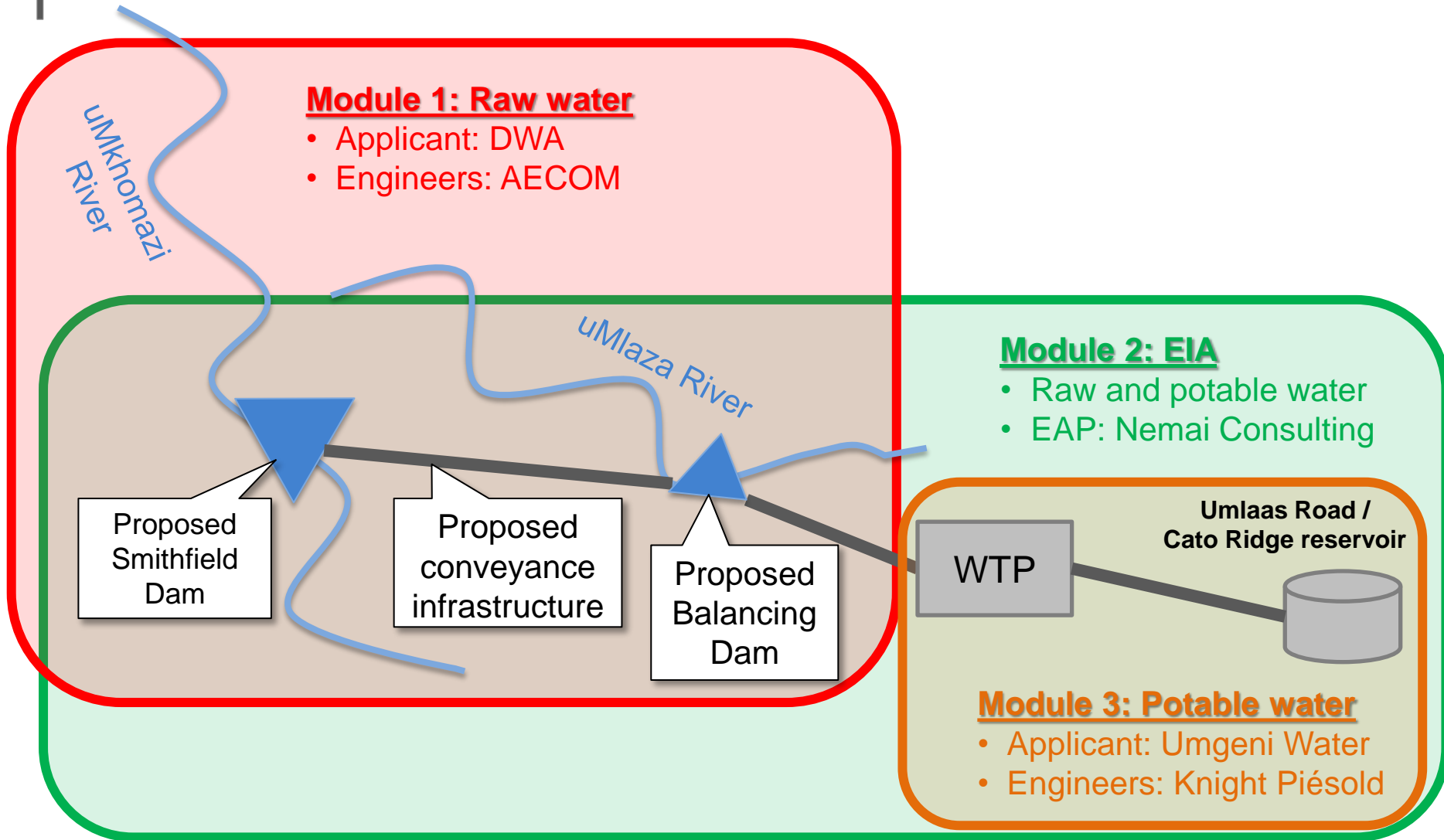
UMKHOMAZI WATER PROJECT PHASE 1

MODULE 2: ENVIRONMENTAL IMPACT ASSESSMENT

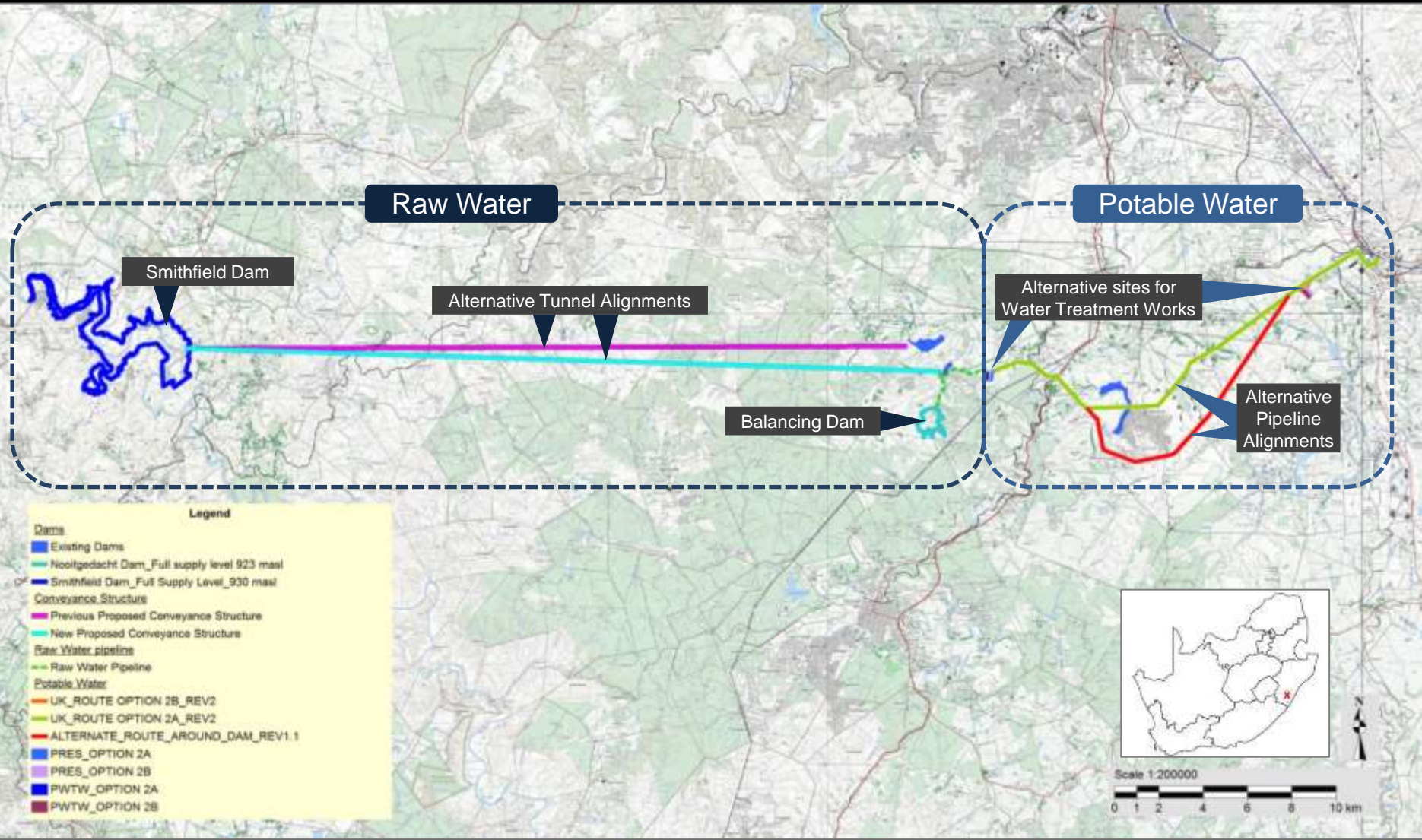
PSC MEETING No. 4 – 03 September 2013



OVERVIEW - MODULE 2



uMkhomazi Water Project Phase 1 (uMWP-1)





OVERVIEW - MODULE 2

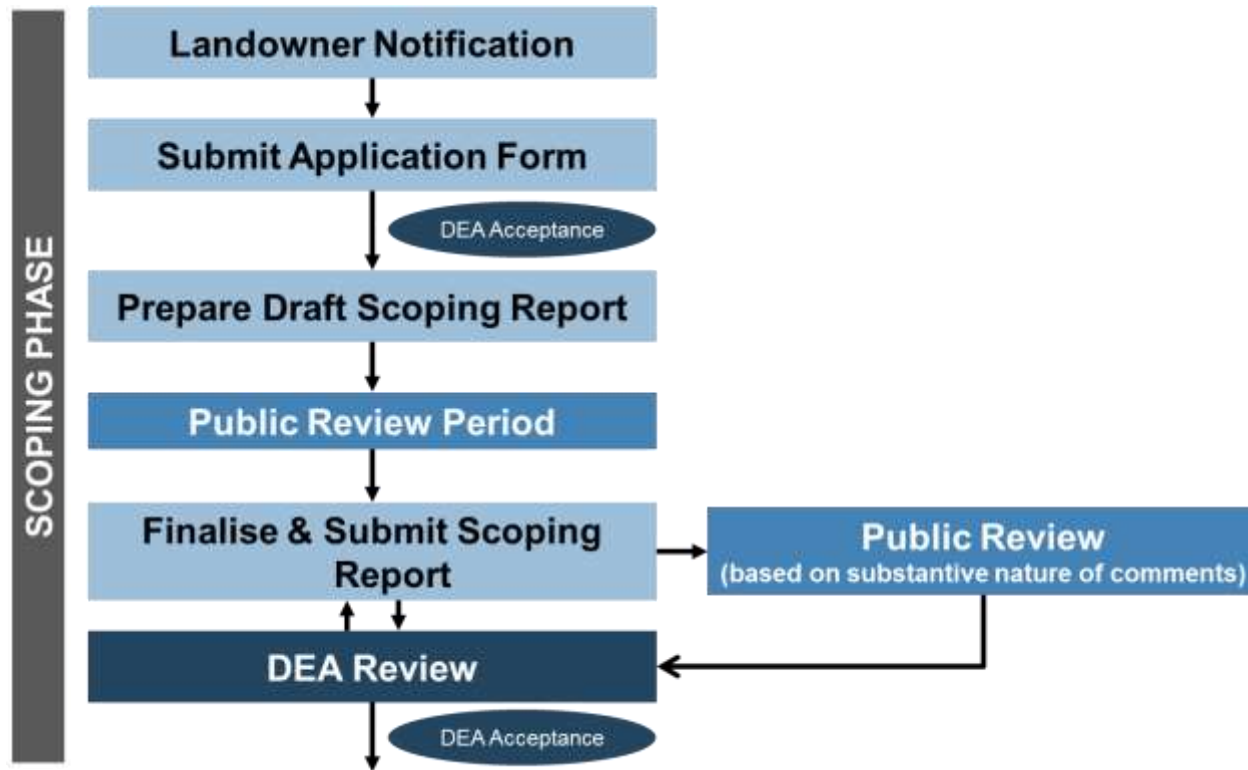
➤ Project Components -

uMWP-1 Component	Infrastructure	Proponent
Raw Water (Module 1)	<ol style="list-style-type: none">1. A new dam at Smithfield on the uMkhomazi River near Richmond.2. Water conveyance infrastructure (including a 32 km long tunnel and a pipeline) to a balancing dam in the Baynesfield area. Alternatives under consideration for the tunnel alignment and location of the balancing dam.	Department of Water Affairs
Potable Water (Module 3)	<ol style="list-style-type: none">1. A water treatment works in the uMlaza River valley.2. A gravity pipeline to the Umgeni Water bulk distribution reservoir system, below the reservoir at Umlaas Road.	Umgeni Water



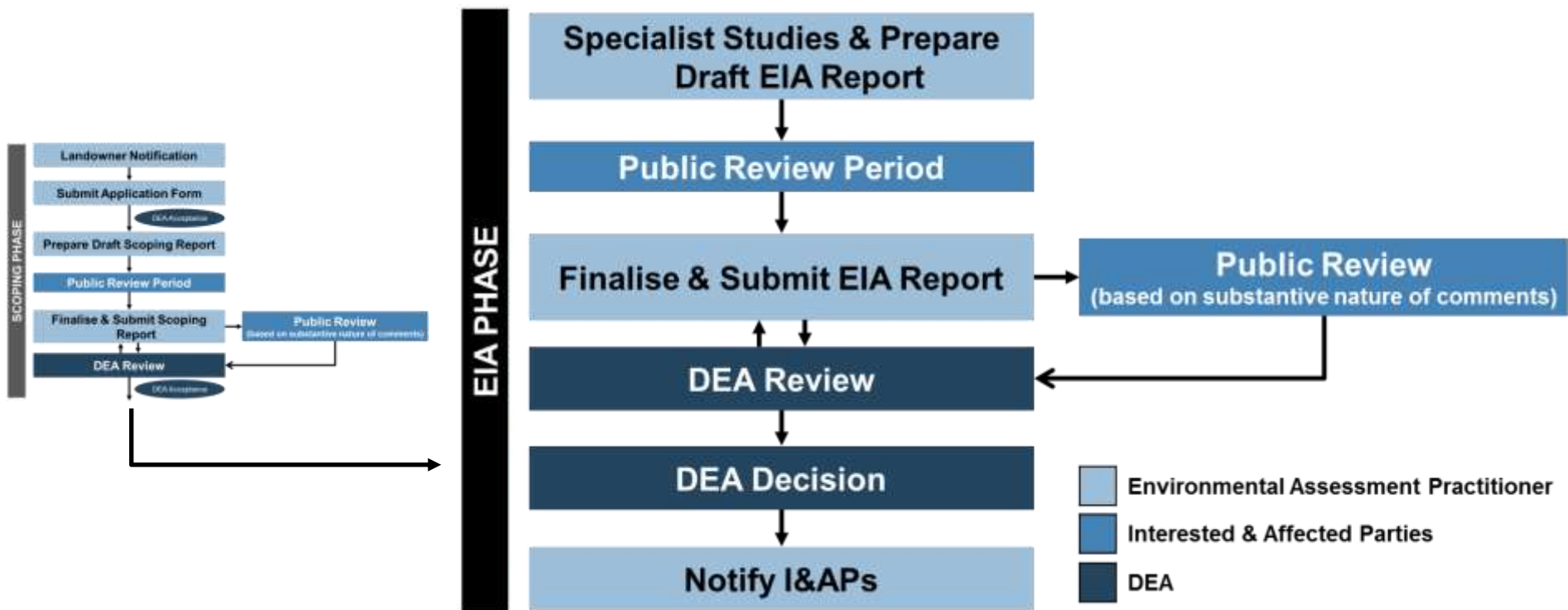
APPROACH TO EIA

➤ Process -



APPROACH TO EIA

➤ Process -

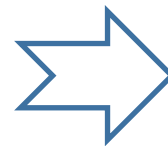




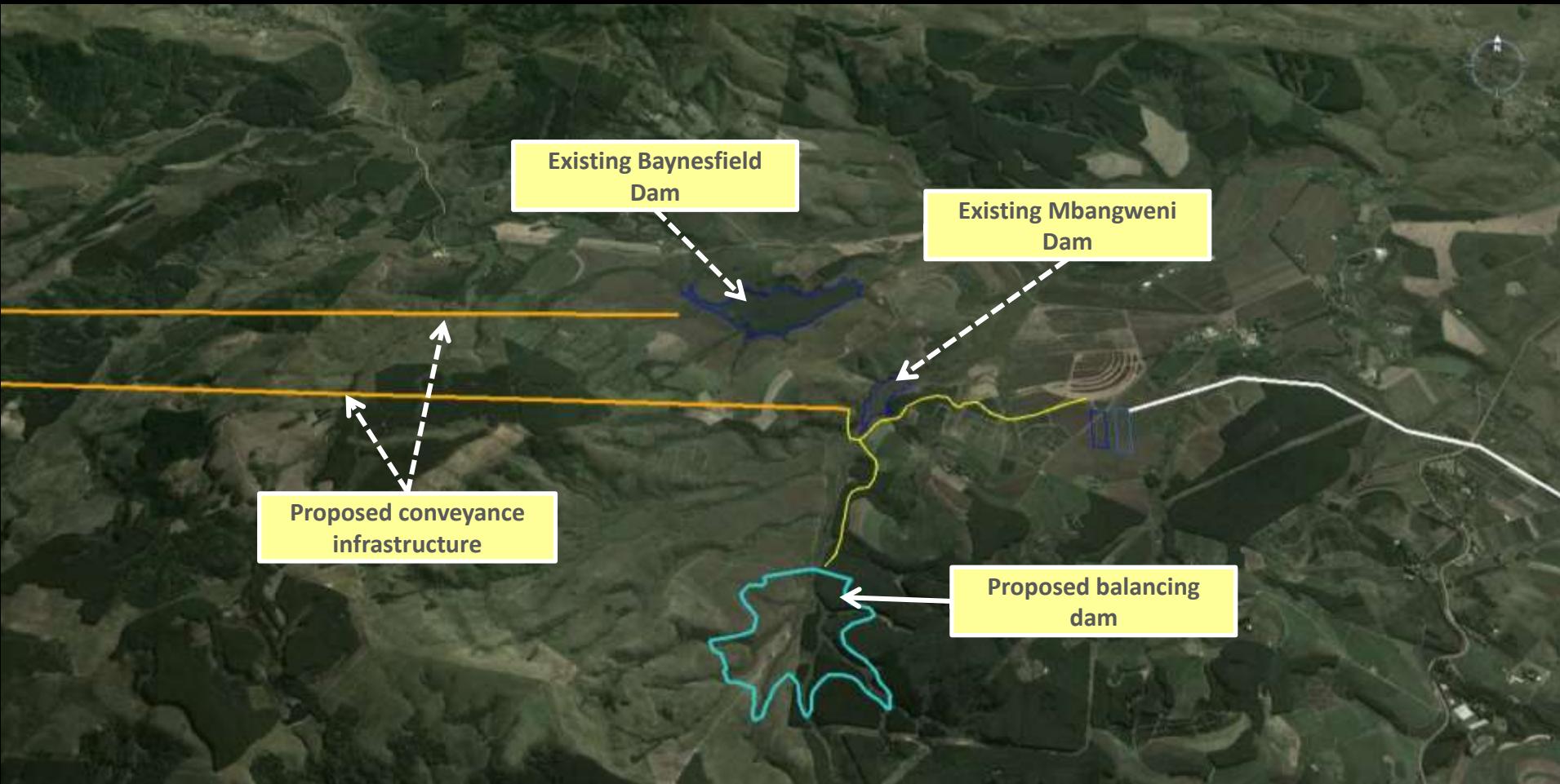
APPROACH TO EIA

➤ Process

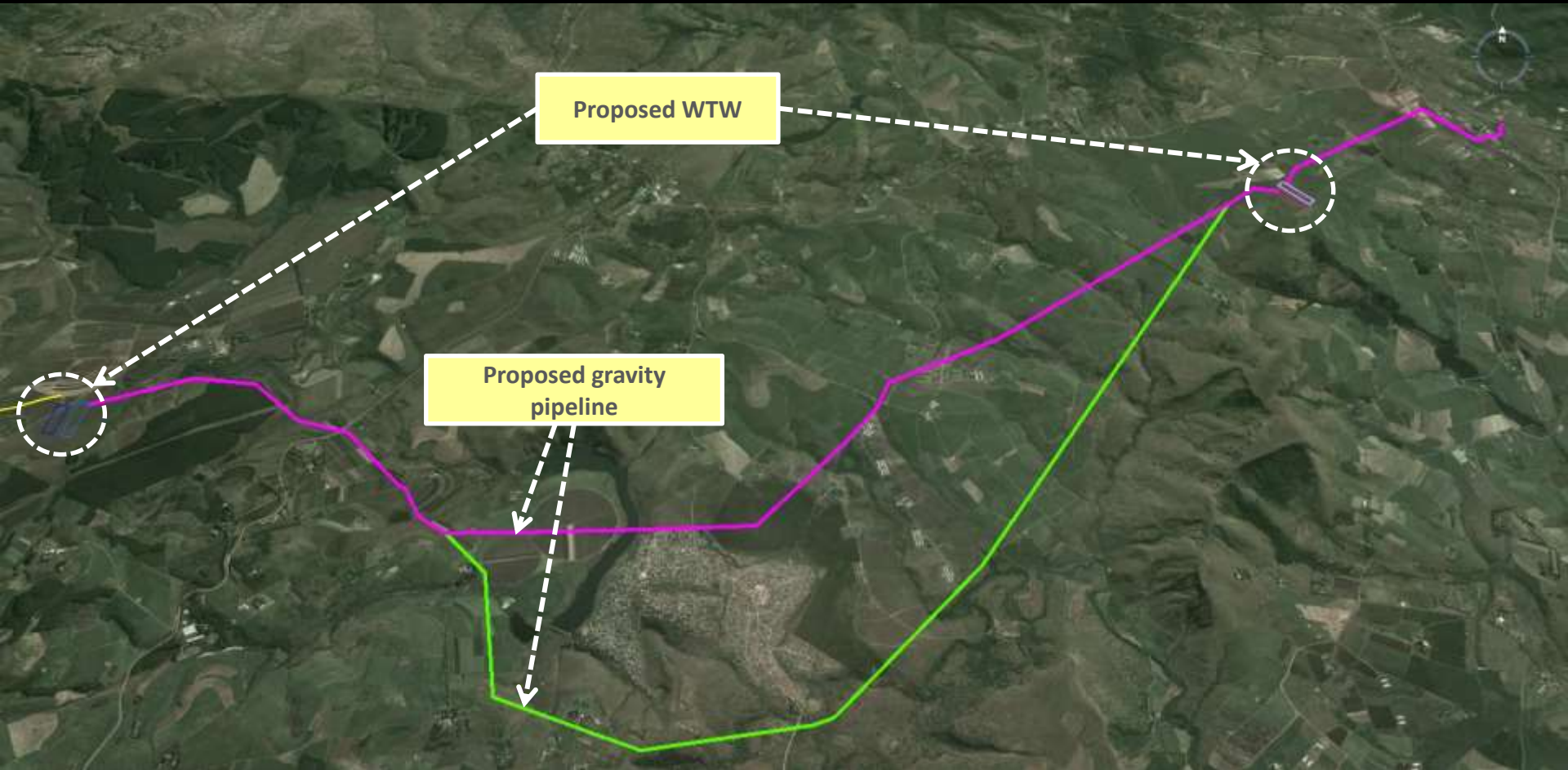
➤ Feasible Alternatives –



uMWP-1 Raw Water

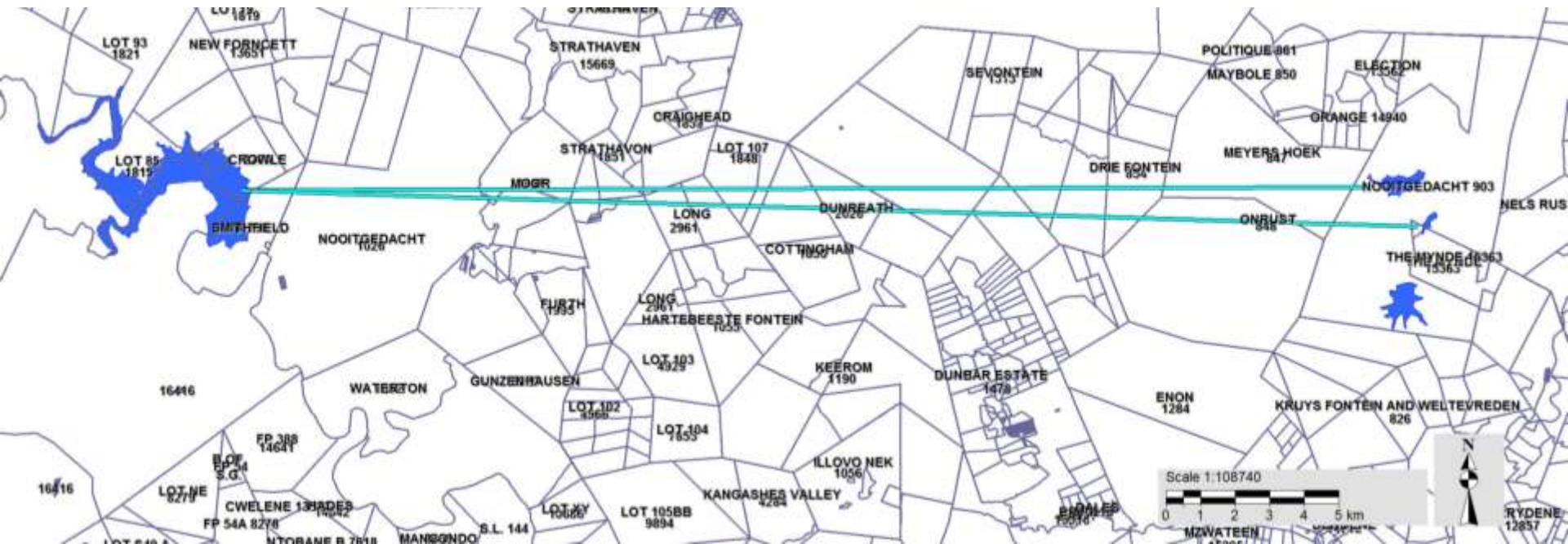


uMWP-1 Potable Water



APPROACH TO EIA

- Process
- Feasible Alternatives
- Public Participation –
 - Landowner notification





APPROACH TO EIA

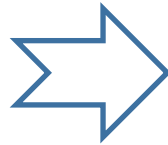
- Process
- Feasible Alternatives
- **Public Participation –**
 - Landowner notification
 - **Targeted meetings**
 - Authorities
 - Strategically located landowners
 - Issue-specific
 - Etc.





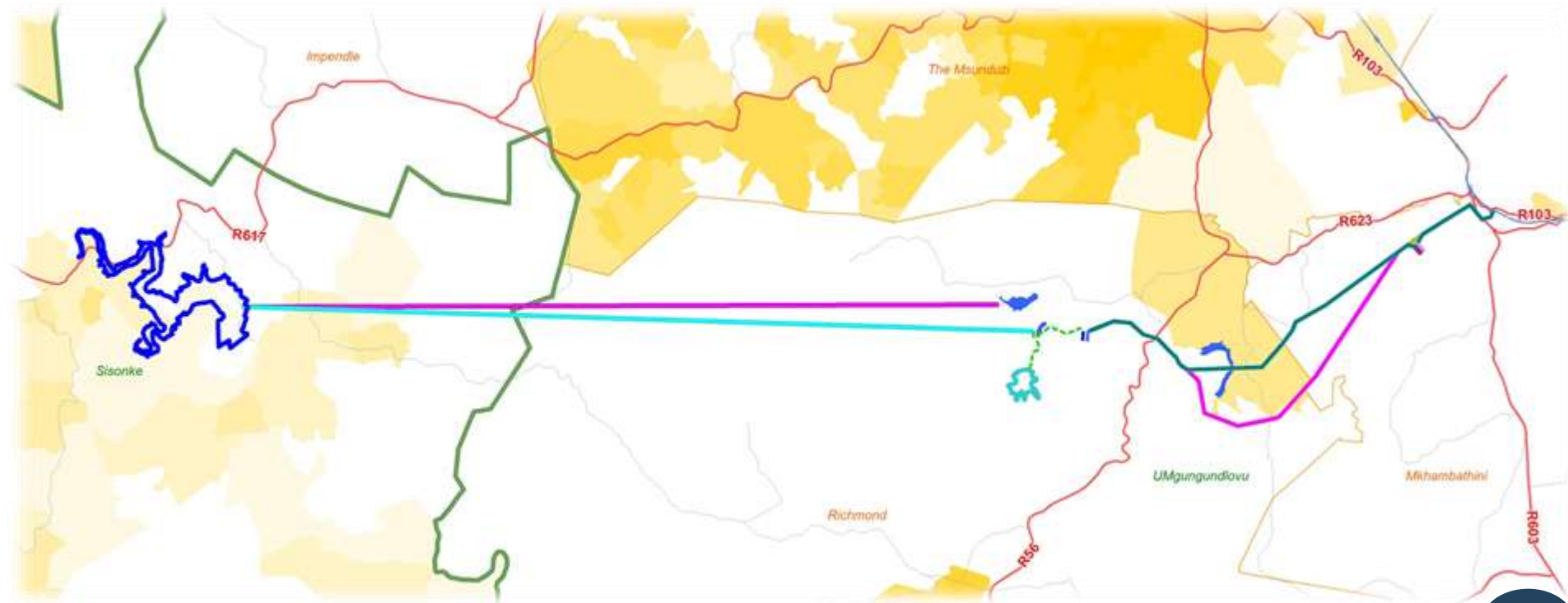
APPROACH TO EIA

- Process
- Feasible Alternatives
- **Public Participation –**
 - Landowner notification
 - Targeted meetings
 - **Formal process**



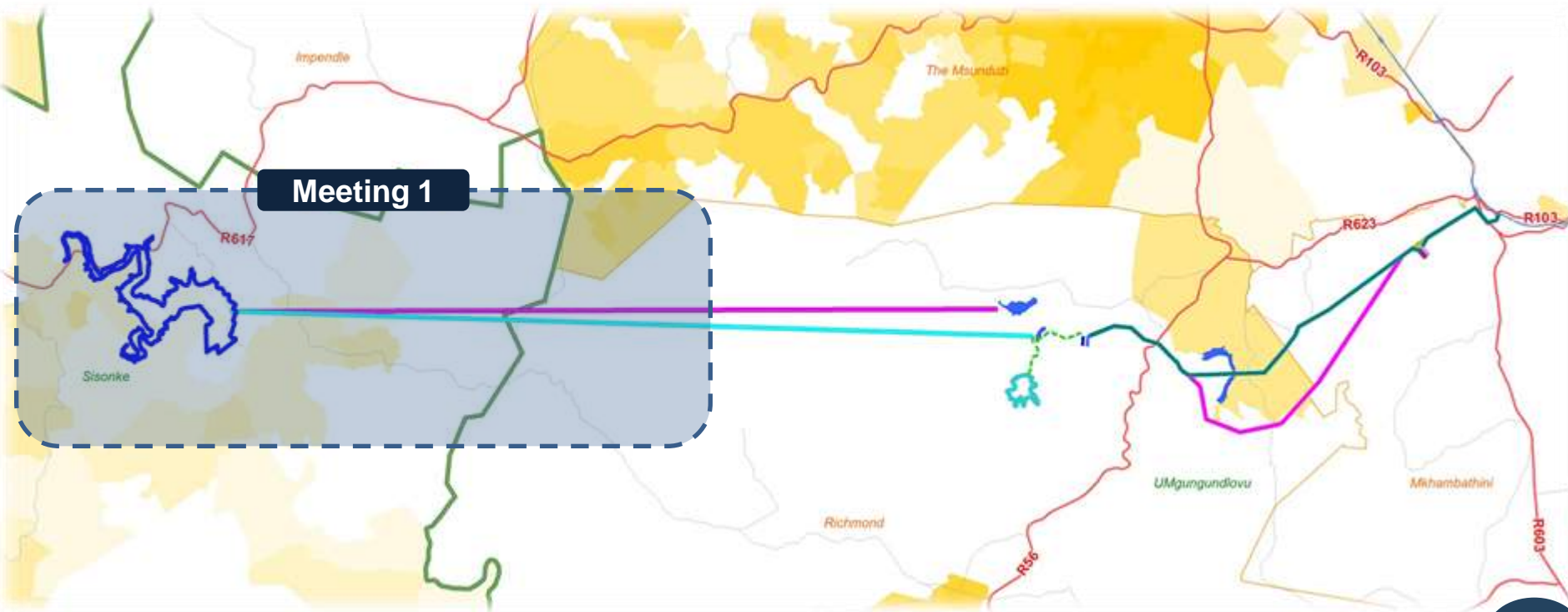
Public Participation Process - Scoping Phase

NO.	TASKS	DATES
1.	Project Announcement (BID & Reply Form, Newspapers, Onsite Notices)	17 Sept – 28 Oct 2013
2.	Individual Landowner Meetings	09 – 10 Oct
3.	Public Meetings	16 – 17 Oct
4.	I&APs review of draft Scoping Report	08 Jan – 18 Feb 2014



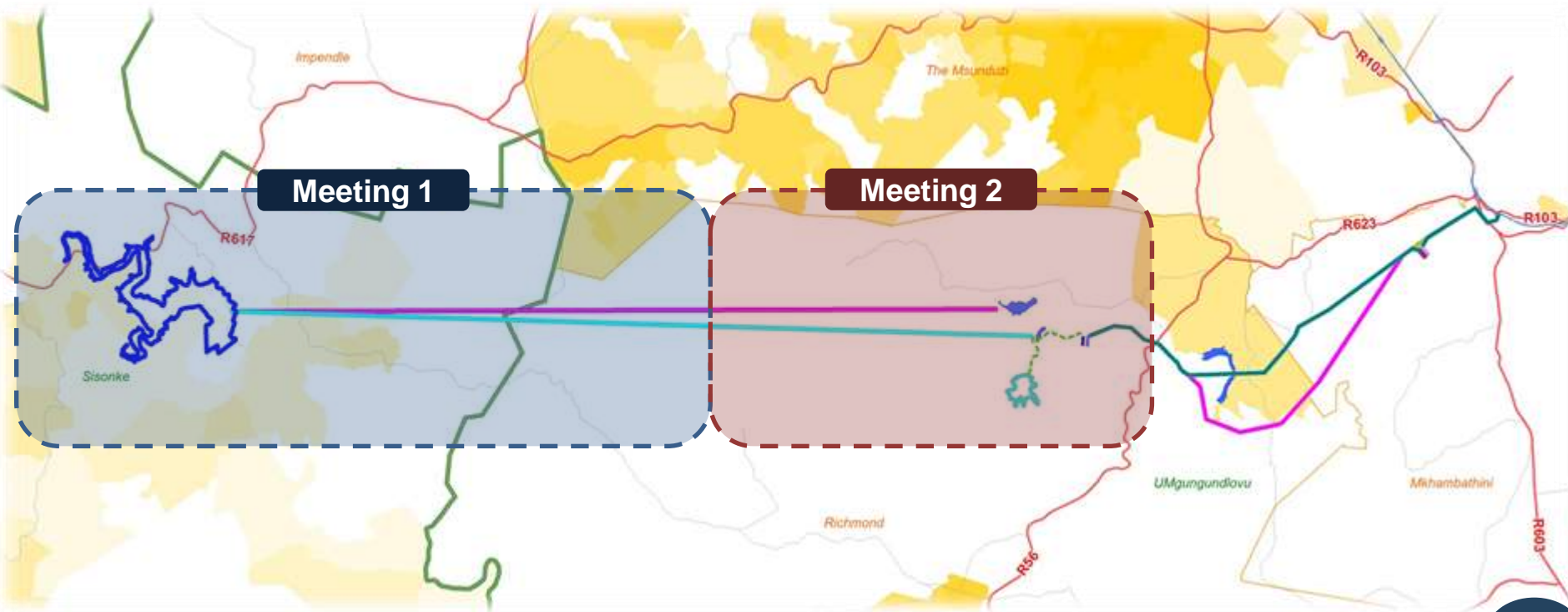
Public Participation Process - Scoping Phase

NO.	TASKS	DATES
1.	Project Announcement (BID & Reply Form, Newspapers, Onsite Notices)	17 Sept – 28 Oct 2013
2.	Individual Landowner Meetings	02 – 03 Oct
3.	Public Meetings	16 – 17 Oct
4.	I&APs review of draft Scoping Report	08 Jan – 18 Feb 2014



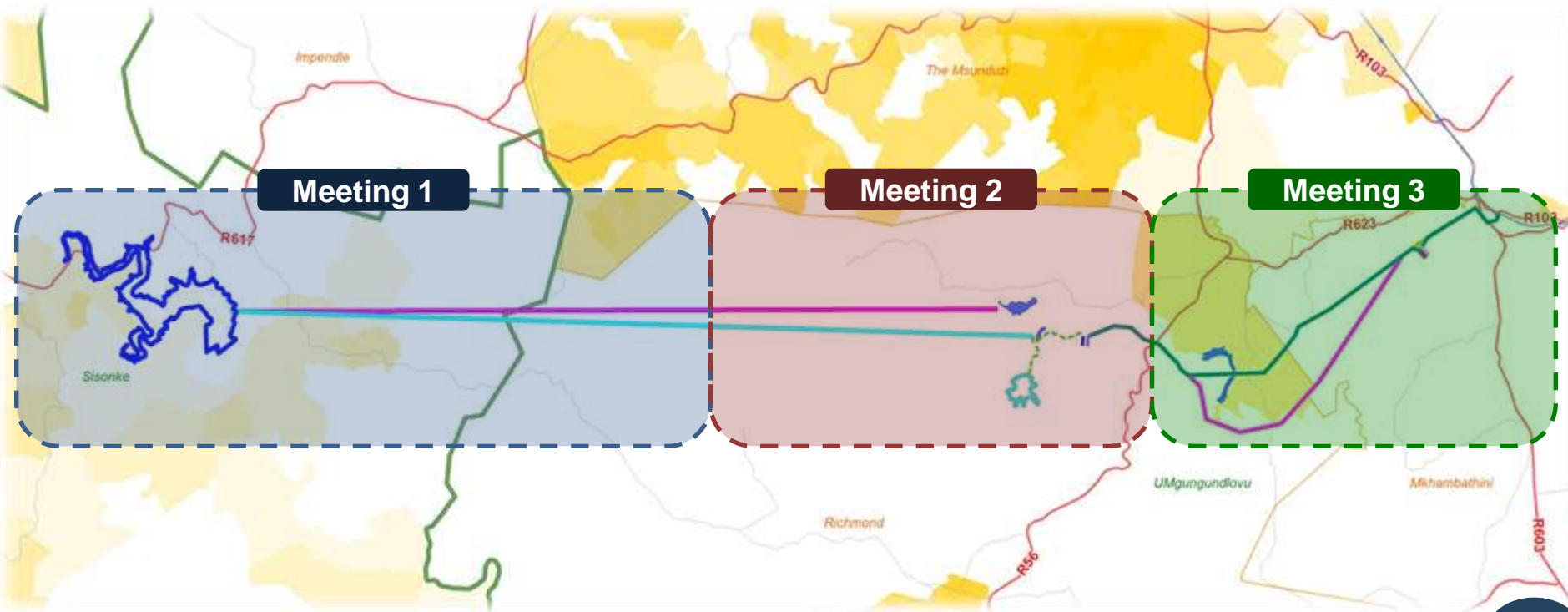
Public Participation Process - Scoping Phase

NO.	TASKS	DATES
1.	Project Announcement (BID & Reply Form, Newspapers, Onsite Notices)	17 Sept – 28 Oct 2013
2.	Individual Landowner Meetings	02 – 03 Oct
3.	Public Meetings	16 – 17 Oct
4.	I&APs review of draft Scoping Report	08 Jan – 18 Feb 2014



Public Participation Process - Scoping Phase

NO.	TASKS	DATES
1.	Project Announcement (BID & Reply Form, Newspapers, Onsite Notices)	17 Sept – 28 Oct 2013
2.	Individual Landowner Meetings	02 – 03 Oct
3.	Public Meetings	16 – 17 Oct
4.	I&APs review of draft Scoping Report	08 Jan – 18 Feb 2014





PROGRESS TO DATE

- Draft Inception Report submitted to Umgeni Water on 08 Jul 2013
- Meeting with Joseph Baynes Estate – 05 Aug 2013
- Draft Integrated Application Forms submitted – 30 Aug 2013
- ToR for Avifauna Study





PRESSING MATTERS

- Obtain DEA reference number
- Finalise BID and circulate for review
- Commence with public participation
- Critical environmental considerations:
 - ❑ Screening – Crane and Blue Swallow habitat
 - ❑ Location refinement – WTW, spoil disposal site







	Excavated material (LCM)
Inlet Portal	600 000 m ³
Outlet Portal	920 000 m ³
Central Portal	550 000 m ³



APPROACH TO EIA

- Process
- Feasible Alternatives
- Public Participation
- **Draft Scoping Report – 20 Nov 2013**





SPECIALIST STUDIES

➤ Original list:

- Fauna and Flora Study
- Heritage Impact Assessment
- Aquatic and Riverine Assessment
- Agricultural Impact Assessment
- Visual Impact Assessment
- Wetland Assessment and Delineation Study
- Social Impact Assessment





SPECIALIST STUDIES

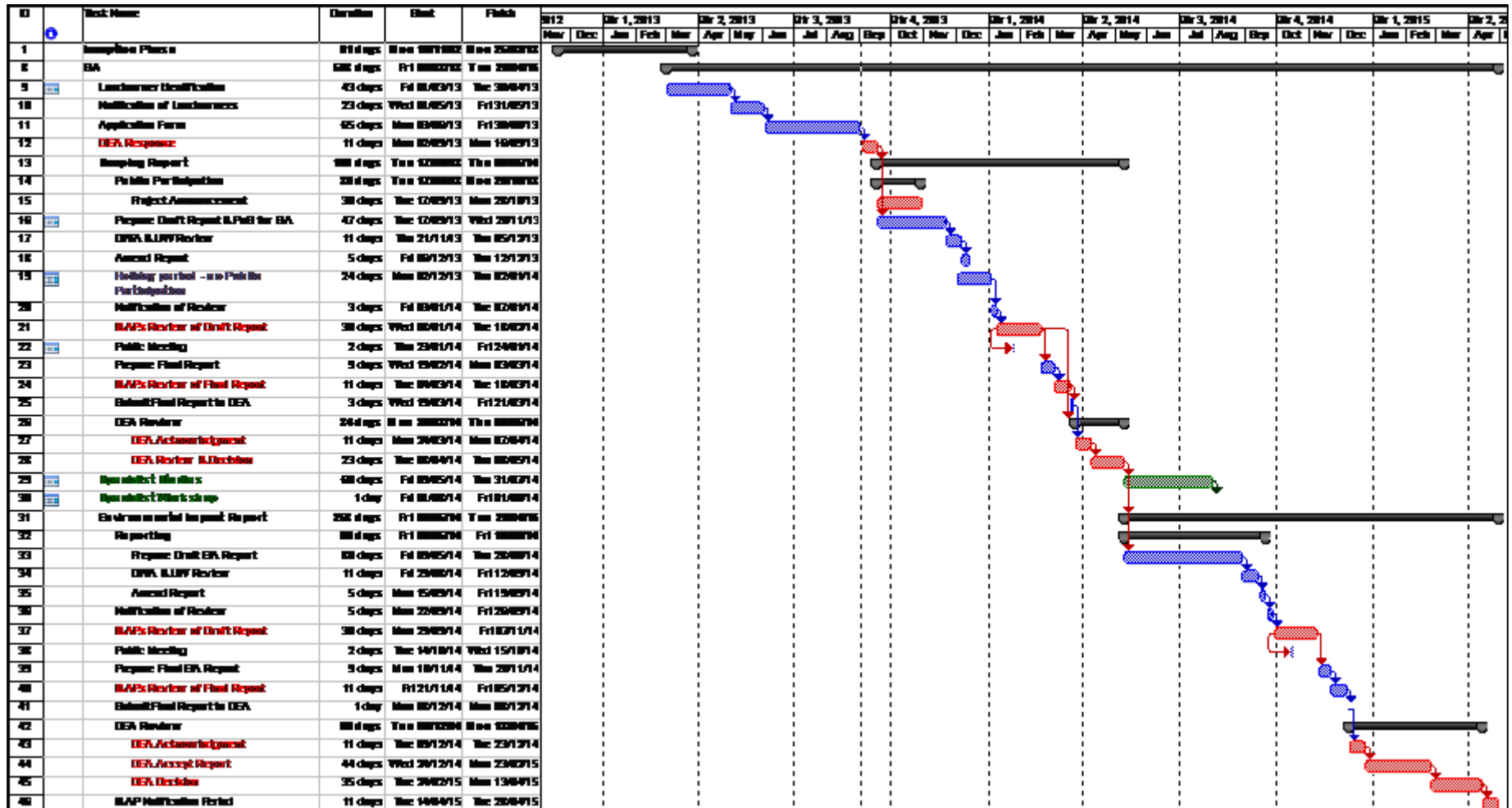
➤ Original list

➤ Additional possible studies:

- Health Impact Assessment
- Biodiversity offsets
- Traffic Impact Assessment
- Geohydrological study
- Relocation Plan
- Estuarine Study
- Avifauna Study
- Archaeological Study & 2nd phase Heritage Impact Assessment



OVERVIEW - MODULE 2: PROGRAMME



Thank you

